

THE STORY OF
A GROWING STEEL PLANT

**WE DREAM
FOR BIG...**



Kamathgiri
Steels Pvt Ltd

The power of Kamathgiri Steels

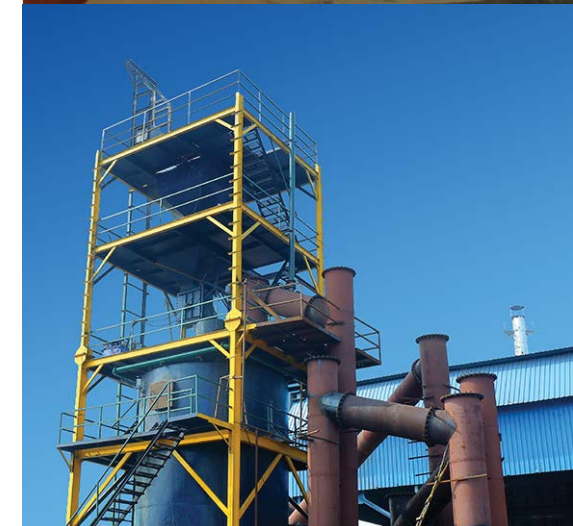
What started out as a journey towards becoming the best steel manufacturing unit in the country, turned out to be Kamathgiri Group, a well-established unit that has further ventured into the medium and Heavy Structural Steels, Flats, and Rounds and Squares segment with a fully Automated Plant at APIIC, Atchutapuram, Visakhapatnam, Andhra Pradesh, all this in just a year. Being a gateway to almost all parts of India gives Kamathgiri the advantage to cater the needs of the customer on an India basis. Logistically the Plant is very near to (only around 30 kms away) one of the best source of the Raw Materials i.e. RINL, Visakhapatnam which helps the company to offer the best quality products in this competitive market.

While the installed capacity of the plant is 1.5 lakh metric tons per annum, producing Medium and Heavy Structural Steel Products, Flats and Rounds, and Squares of different grades like E-250, E-350, EN8/8D, etc., this manufacturing facility also supports nearly 250 people with direct employment and around 500 people with indirect employment.

This Newly setup Steel Rolling Mill has commenced to cater to the needs of the growing demand in steel and especially structural steel items such as Angles, Channels, Beams, RSJ in various sizes and grades. These structural steels are an integral part of the infrastructure and construction industries as they give shape and strength to buildings, bridges, transmission towers, industrial sheds, and many other applications. M/S Kamathgiri Steels guarantees meticulous quality, and transparent business association at a competitive price.

We produce a wide range of premium steel products that enable growth and drive a green economy across a wide variety of industries.

This unit will roll the high quality Structural, Flats, and Round and Square items from the best quality prime raw materials. These Steel Products (items) are for a unique choice for general-purpose structures, Bridges and Flyovers, Dams, Thermal and Power Plants, Airport Infrastructures, Engineering Structures, Engineering, Automobile Industries, and so on.



Our Product Mix

Structural items

Medium and Heavy Angles, Channels, & Beams (I-Beams, H-Beams, NP-Beams, RSJ, etc.) Rounds, Squares, and Flats for all the applications. Apart from standard dimensions, customize products can also be rolled for different customers as per their application and usage under you.

Section Sizes (In mm)

Rounds	70 to 230
Flats:	
Width	100 to 400
Thickness	5 to 32
Squares	75 to 150
RCS	75 to 200

Medium Channel

ISMC200x75
ISMC250x82
ISMC300x90
ISMC400x100



Strong,
reliable and
built to last



From
construction to
manufacturing,
the perfect
choice



The best
choice for
durability and
versatility.



Equal Angle (Dim. in mm)

ISA 110x110x8/10/12
ISA 120x120x8/10/12
ISA 130x130x8/10/12/16
ISA 150x150x10/12/16/20
ISA200x200x12/16/20/25
ISA250x250x16/20/25/30

I-Beams

ISMB200XI00
ISMB250XI25
ISMB300XI40
ISMB350XI40
ISMB400XI50
ISMB450XI50
ISMB500XI80
ISMB600X210

H-Beams

RSJ150XI50
RSJ152XI52
RSJ203X203

- Common Grade as per IS 2062:2011 (Both E250 & E350)
- Dimensional tolerance as per IS:808
- Rolling & cutting tolerance as per IS:1852

Your trusted partner.

Quality Policy

An essential trait when it comes to staying the best in the trade is to ensure quality control, and Kamathgiri Steel Private Limited takes it very seriously.

Experience in implementing & following the Total Quality Management (TQM) which includes Monitoring and recording of all vital parameters of Reheating in the Furnace, Rolling, and Natural Cooling to ensure the best quality production, Producing Standard Sections ,Round Bars, Flat Bars, Square Bars, Round Corner Squares (RCS).

By maintaining BIS of Common Grades: IS2062:2011, IS 1875:1992, the structurals are available in equivalent to following foreign specifications: ASTM-A36, JIS - G - 3101 - SS400 BS - 4360 GRADES, 40A,43A, SOB, SOC, EN-10025GRADESS-275, JO, RS-355 /JO, JR, 5-235, JR, DIN-17100ST37.2/44.2.

The Company is Implementing the ISO (International Organisation for Standards) 9001-2015, for Quality Management System,14001-2015 for Environmental Management System, and 45001-2018 Occupational Health and Safety System.

Raw Material Sourcing

Here's where it all begins, the collecting of our quality raw materials from the Unit, near RINL, Vizag steel plant and Steel Authority of India Limited,Bhilai, Rourkela, Durgapur and JSPL. Which are all approved source of Raw Materials for Major steel requirements/projects, and we take pride in sourcing our materials from a trusted source.

Through a long-term MOU customer of RINL, Vizag, Kamathgirihas been procuring all its Raw Materials regularly and if be needed, the raw material can be procured from BSP and other sources also.

Logistical Advantage

KSPL also has an extra advantage in terms of logistics while sourcing of all its raw materials as it is only 30Kms from RINL,Vizag thus involving minimum freight. Proximity to 3 major sea Ports ie., Gangavaram, Visakhapatnam, and Krishnapatnam port at AP gives the company a major advantage for its international business.

Trust

Over the years, KAMATHGIRI GROUP companies has worked to build a trusting relationship with the consumers, aiming to create a long-term association with major industries in India and over 30 years relationship with all other customers in Automobile, Engineering, Infrastructure & construction industries.

Commitment

We are committed to challenges. We like taking a challenge by the horns and finding a solution that caters our consumers. KSPL is always ready to accept new challenges to develop customized products and develop new infrastructure to cater to specific requirements of its customers for a long-term relationship.

Dedication

Kamathgiri takes the pride in having a very dedicated and motivated team, straight from the top all the way to every worker. To meet the customer's delivery schedule and quality requirements, KSPL always strive to delight them. This continues effort has helped us to attain a sustainable growth story till date.



Raw Material

Blooms

Dimensional Inspection

Width 320 +/- 5mm
Over 250mm +/- 5mm
Length +/- 150mm

Grade

E-250A
E-350 EN-8/8D

Billet

Dimensional Inspection

Width
Over 150 Sq +/-3.0mm
Length +/- 150mm

Grade

E-250A E-350
EN-8/8D

Gas Cutting

Chipping the cutting edges
from foreign material

Charge For Furnace

- 1. Should cover all rail linings with charge.
- 2. Charge should be clean from foreign material.

Furnace

Slabs

Dimensional Inspection

Saparate the usable
material and send the
remaining for dispatch

Production Stands

26" Stands-2 nos
Driven with 2500HP
RPM:75
JOISTS & CHANNAL

Cooling Bed

30 x 40 Mt

Dispatch Yard

26" Stands
2Nos. 2500HP
drive
RPM:75

Straightening

30 x 40 Mt

Bundling & Packaging

26" Stands
2Nos.-2500HP drive
RPM:65
ROUNDS upto 220



Man. Machine. Excellence.

Total rolling operation takes place with different stages with multiple Drives based on the size and profile of the finished goods production.

Total Production area in the Plant is covered with the roofed sheds and open space of 30,000 sq.mt. The factory consists of:

A well-equipped Quality Testing Laboratory: Fully equipped with Latest Instruments including Spectrometer "Foundry master Smart" and "Universal Testing Machine 600KN Model- UTE-C-600" along with all the Chemical Wet analysis. In addition to this 'Charpy's impact testing Machine and Brinell hardness testing machine.

Workshop with full-fledged machinery: Dedicated in-housework shop is being operated with fully automatic machines like Planer Machines and Heavy-duty Lathe machines, Drilling and Grinding Machines etc. Total Machine shop consists 15nos.

Electro mechanical Weigh Bridge: 100 MTs capacity

Automatic Cooling Bed: Total Span of the Cooling Bed is 30 Mtrs (W) x 40 Mtrs (L) fully covered with Sheds for natural cooling of the Hot rolled finished goods to reduce the temperature from 600 degree centigrade to normal temperature.

Our Promoters

Sri Satyanarayan Agarwal, Chairman and Sri Manish Agarwal, Managing Director of United Group, Chennai, incepted the organization in 1975, successfully developed and attained a respected leadership role in dealing with Carbon, Alloy and Special Steels and we also have our group company as Bright Bar/ shafting bars Manufacturing Unit, in the name of M/s. Mahalakshmi Bright Steel Industries Pvt Ltd, one of the largest units in India, manufacturing 3000 Metric Tons per month. This dynamic group, with its rich knowledge, experience and wisdom in domestic steel sector decided to establish a Steel Rolling Plant (ASME) in the name of M/s. Kamathgiri Steels Pvt Ltd (KSPL) at Visakhapatnam, in the year 2020 with production capacity of 12000 Metric Tons per month, manufacturing large structural steels, Medium & Heavy Angles, Channels, Beams and rounds with initial installed capacity of 1,50,000 Metric Tons per annum. The commercial production commenced in January, 2022.



The Key Management Team

Sri R.K.Birla Managing Director

BBA (Gold Medalist), MBA from BITS, Pilani, With 45 years of experience, started his career in Textile industry and was VP (Oprn.) in M/S Birla Jute & Industries Ltd. Joined M/S Poddar Projects Ltd in Steel manufacturing Unit at Hyderabad as CEO in 1984. He got associated with M/S Sujana Metal Products Ltd in 1992 as Director (operations) and retired as Managing Director in 2020. Now he is leading the entire team of KSPL as Managing Director.

Sri A.Venku Reddy COO

B.E (Mech) has vast experience in Implementation and Execution of Integrated Steel Projects along with Power Plants. He started his career as a Project Engineer and has been associated with prestigious Integrated Steel Plants in Telengana State like M.S Agarwal Foundries, Marutispat & Energy Pvt.Ltd and Sujana Steel & Power and served successfully as Vice president level by handling entire operations of the respective Plants. With his vast experience and expertise, at present as a COO of KSPL he is performing his role most efficiently.

Sri Goutam Dutta VP – Marketing

B.Sc (MPC), MBA, from DU, has 36 years of vast experience in Electrical Engineering and Steel Industries. Started his career as Sales Officer and become the Zonal Head and was heading the business of East India including Nepal, Bangladesh, Bhutan etc in the electrical Industry and worked with the companies like Crompton Greaves, Havells India etc. Since 2005, he has been in Steel Industries and worked in the Level of GM –Marketing for 2 years, VP–Marketing for 7 years and as CEO for 7 years. He has been looking after the National and International Marketing, Branding, Manpower planning, Production planning so far. Now he is heading the Entire Sales and Marketing of KSPL as VP – Marketing.

Mr.B. Janardanarao GM – Administration

B.E (Mech), M BA(Mktg) and Ph.D., from Andhra University, started his career as Industrial Engineer with R.I.N.L, Vizag. He has 30 years of vast experience in steel industry. Worked with both Structural and TMT Steel Rolling Mills of G.M.R Group of Industries and Beekay Steel Industries at various levels from Production Engineer to GM (Operations for more than 25 years. Also, he worked in abroad with Alrostamani Eurogulf, Dubai, and Hadid Majan, Muscat for more than 5 years as Factory Manager Level. Now, he is handling all administrative activities of KSPL smoothly.

Mr.G. Murali Mohan General Manager

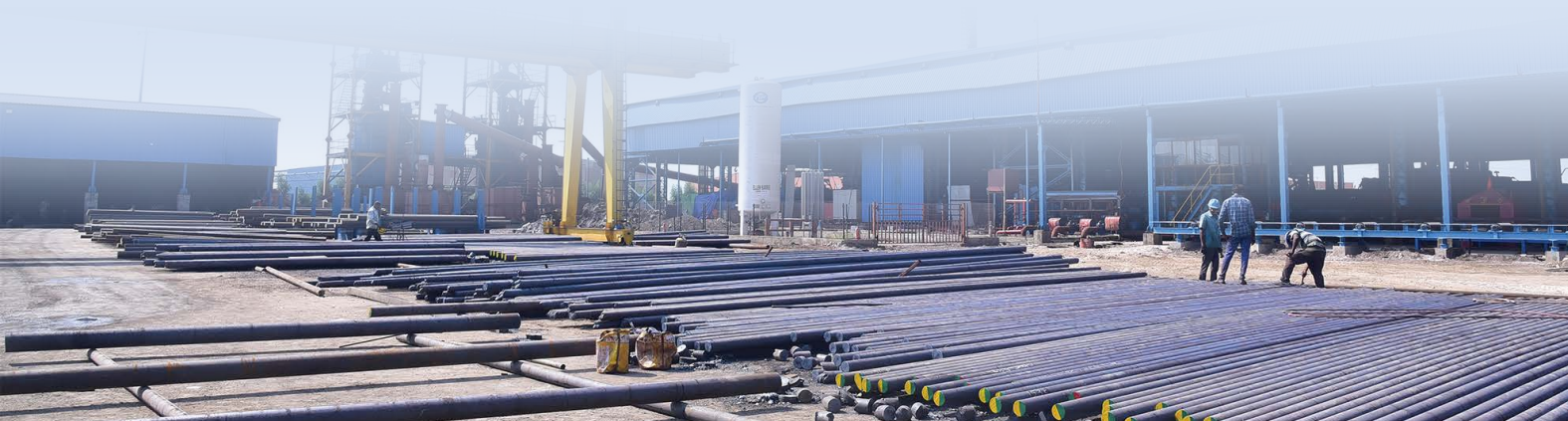
B.Tech (Tech.) from JNTU, Hyderabad, has well experience both in Engineering Industry and Steel Industry for more than 25 years worked at different level from Plant Engineer to General Manager (Operation). He handled individually three projects from foundation to operation also he has expertise in Plant Design and Drawing along with project execution and implementation. He has joined us as General Manager, Project since the project implementation stage and operating the entire plant efficiently.

Mr. Subrata Dutta DGM – Marketing

Commerce Graduate with Diploma in Business Management from ICFAI has vast experience in Sales and Marketing field both in domestic and export market over 27 years. He has worked with several multi-national companies like 'A Lords Chemical Group', 'Emami Group', particularly in steel industries like 'Beekay Steel Industries and Salag ram Power & Steel Pvt. Ltd as an Export Executive to Asst. General Manager (Mktg) at various levels. Now as a Sr. Manager (Sales &Marketing) he is handling all domestic and export sales very efficiently.

Mr. Dhirajkuwar Foreman

Diploma in Engineering, Foreman (Prod. & Maint.) He started his career as a shift supervisor in ESSARJPiti, a renowned Steel Rolling Mill in Jalna, and as a Shift-in-charge in MITC, Nasik, & Barjaurasteels, Durgapur., as an Asst. Foreman in Pushpaka Steel Pvt. Ltd, Pune, and as a Foreman he increased qualitative, production levels of Sujana Steels, Vizag and Deccan Steel, Hyd, and in Sawariya Steel Hyd. He is the most successful and efficient foreman in Structural Steel Rolling, with his vast experience over span of 25 years he could develop so many customized products as per the Market /Customer requirement along with regular, standard structural items in angles, Channels, I-Beams, H-Beams, N.P-Beams, Flats, Rounds, Squares. Now, in KSPL as a Foreman he is handling the total Production and Maintenance activities most effectively and maintaining maximum productivity levels.



Our valued customers

Kamathgiri works with some of the most quality conscious customers across regions and industry section. Displayed below are some of our premium customers.

Our customers include from these countries:

- India
- United Arab Emirates
- Saudi Arabia
- Kingdom of Bahrain



Certifications



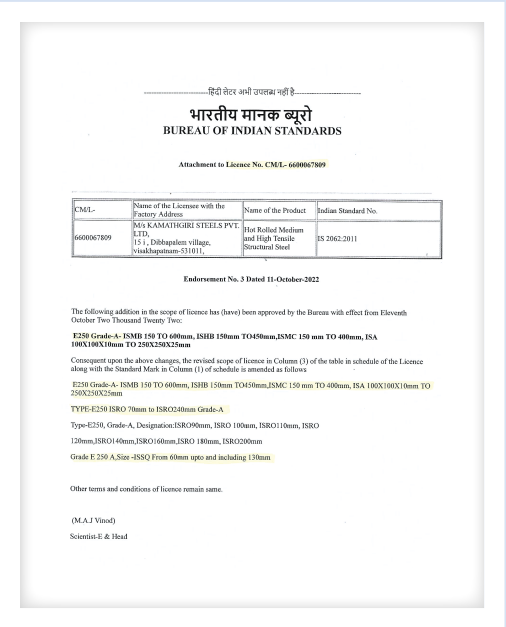
ISO 9001:2015



ISO 14001:2015



ISO 45001:2018



Bureau of Indian Standards



Loading Packed Finished Goods with 14MT capacity Telescopic Mobile Crane



Administrative Building (total 1000Sq.mtrs) existing inside premises of Kamathgiri Steels Pvt. Ltd.



Sprokonix Erosion Machine—for Branding/Embossing on the Finishing mill Rolls



EOT Cranes assemblies. of 15MTs capacity with 27mtrs Span



CUMMINS make -Diesel generator Set, capacity of 380KVA - Stand by Power Source for emergency operations.



High Tension Powered Sub station with VCB - AB switches- 2.5MVA Transformers(3nos) Assembly



Stacked Raw Materials – Blooms of Various sizes , Grade wise for the Production- stacked lot wise in the Raw Material Yard.



Stock of Finished goods Rounds of various Sizes Ranging from 85mm dia. to 240mm Dia.in Finished goods' Yard



L.T.- Power Control Station with distribution Panel Boards with Capacitor banksfor total Machinery and equipment of the Plant



26" CRS Rolling Mill -Rd. Gear Box- Pinion Gear Box assembly with 3Hi-Rolling Mill stand Assembly – stage 1 driven with 2000HP A.C Slipring Motor- stage 1



Loading the Finished goods in to containers for Export purpose with the 14MT capacity Telescopic



Finished goods – Steel Structural Items, stacked at finished goods yard.



Spectrometer for testing of chemistry of Raw Materials and Finished goods in house Laboratory.



Band saw Cutting Machine assemblies for the customized size/length cutting of the Rounds of sizes ranging from 85mm dia. to 240mm dia.



Machine work shop/Rolls preparation Shop



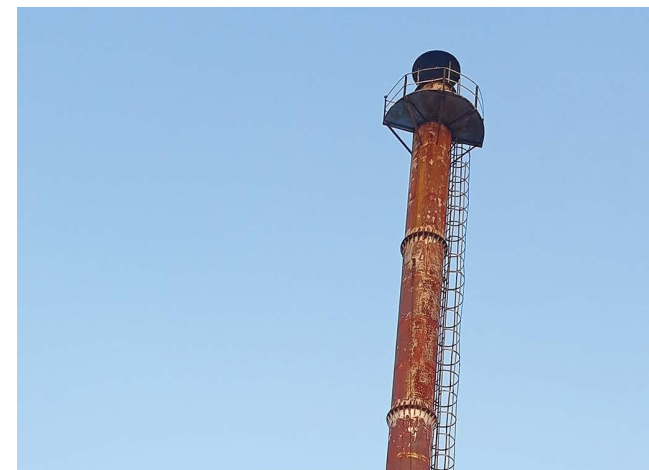
Cooling Bed of 30mtrs x 45Mtrs for natural cooling and normalizing the hot rolled Steel structural and Round bars of different sizes.



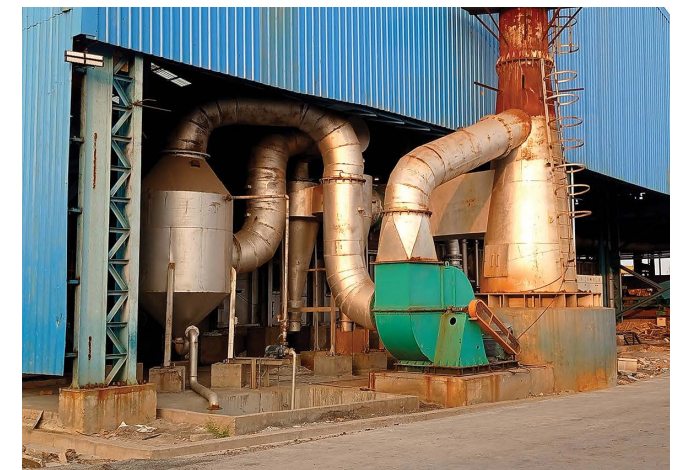
30Mtrs(l) x 6Mtrs(w) – with holding capacity of 350MTs and with 15MTs/Hr rate of heating, Coal Gas fired Reheating furnace.



Step down 2500KVA, HT Transformers assemblies with 33KV/415V potentiality



35 Mtrs height Chimney for Natural Draught of exhaust gases from the Reheating furnace



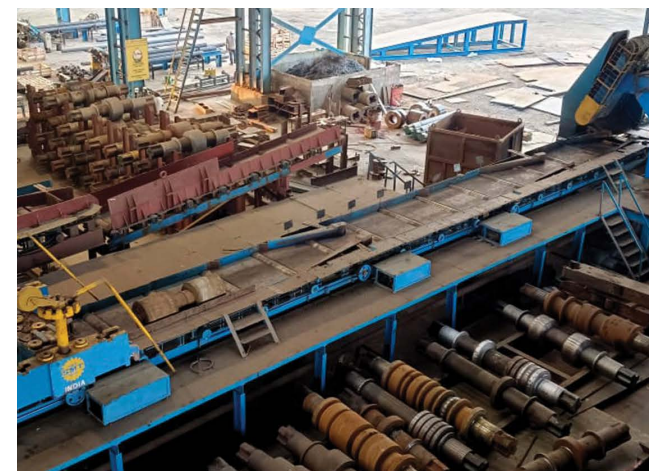
Mechanical Scrubber – a pollution control equipment assembled with Furnace and Airblower



Coal Gasifier – 2nos – 1200R and 1500R assemblies



A side view of Main Plant shed, consisting of 10000 Sq.Mtrs area



Stacking of Different sizes of Rolls for production different products, produced in our Rolling mill



180 rounds of 320 mm length pins are getting packed for export

**Kamathgiri Steels Pvt Ltd**

Plot No. 15-i, Dibbapalem Village,
Atchutapuram, Visakhapatnam – 531 011. (AP)



+91 98314 75501 | +91 97487 73314



sales@ksplvizag.com
www.ksplvizag.com



GST NO: 37AAHCK9708K1ZY
CIN NO: U74999AP2020PTC113912